



# SORATH PATTERN ENTERPRISE

M/s Sorath pattern enterprise is in a business of making pattern since 1980. this business was started by My father Mr. Arvind bhai Gajjar. Making of pattern for foundry is in our blood. My grand father is also in same profession.

And now I, Mr. Krunal A. Gajjar also doing same business with technology of Cad-Cam for best in class product and service to our valued customer.

I have studied in INDO GERMAN TOOL ROOM, AHMEDABAD,

I have good knowledge of making foundry patterns, HPDC dies, GDC dies for aluminum and core dies,

I worked in

- MARUTI UDYOG LIMITED, GURGAON, (IN A TOOL ROOM)
- SEJASMI INDUSTRIES (INDIA) PVT. LTD.( AS A DESIGN MANAGER)

# MACHINES WE HAVE

- VMC LV117 (1140 X 710 X 710 ) , TAIWAN MADE -01 NOS
- VMC SURYA ( 850 X 350 X 360) , BFW , INDIA -01 NOS
- VMC 850 ( 800 X 500 X 500) , JYOTI, INDIA -01 NOS
- CONVENTIONAL LATHE MACHINE -03 NOS
- CONVENTIONAL HORIZONTAL MILLING -01 NOS
- RADIAL DRILL MACHINE -01 NOS
- PILLAR DRILL MACHINE -01 NOS
- FORKLIFT FOR HANDING HEAVY JOBS
- AND IN OUT SOURCING AVAILABILITIES IS VERY LARGE WE HAVE
  - UP TO 12 MACHINES IN OUR GROUP
  - SIZES VERY FROM 3MTR X 2MTR X 1MTR



# SOFTWARE WE USE

- PRO ENGINEER CREO 3.0 ( FOR 3D CAD WORKS) -01 SEAT
- ZW3D 2013 ( FOR 3D CAD WORKS) – 01 SEAT
- ZWCAD 2015 ( FOR 2D CAD WORKS) -02 SEATS
- HYPERMILL 2010 ( FOR CAM WORKS) – 01 SEAT



# TYPES OF PATTERN WE MAKE

- HAND MOLDING PATTERNS
- MACHINE MOLDING PATTERN (SEMI AUTOMATIC SQUIZE ZOLTING TYPE)
- HIGH PRESSURE MOLDING LINE (SINTO, DISA)
- NOBAKE TYPE (OMEGA MACHINES)
- COLD CORE DIES (AUTOMATIC SPAN, COMPAX MACHINE)
- SHELL CORE DIE ( NAVDISH, SHUSHA)

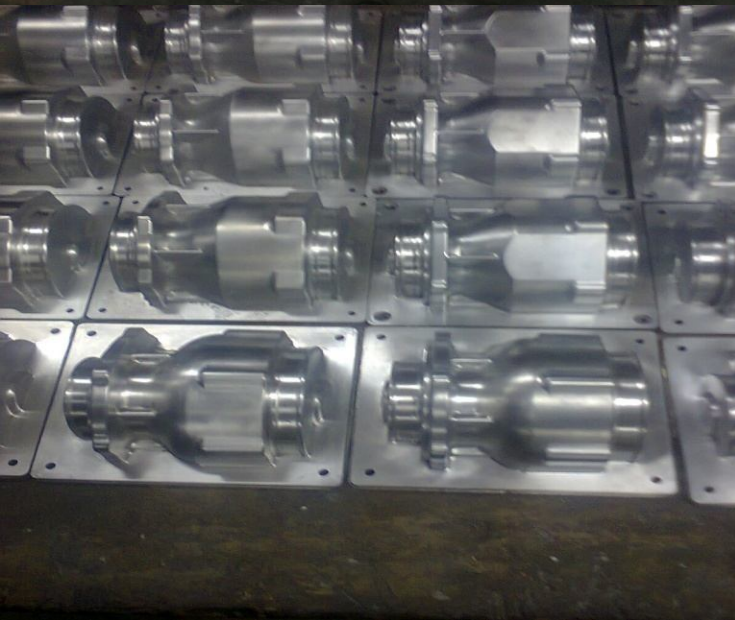
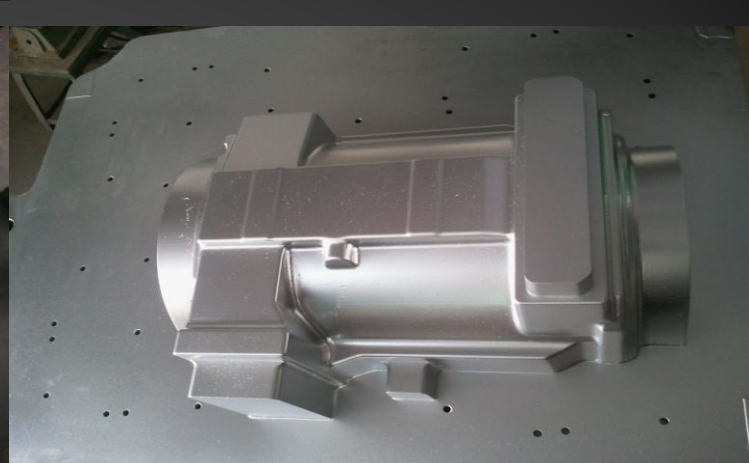
WE CAN MAKE PATTERN IN METAL LIKE

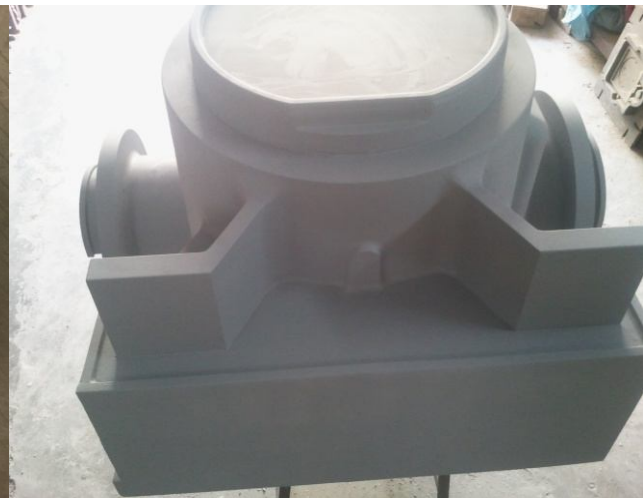
- WOODEN,
- ALLUMINUM (COMMERCIAL / LM6 / HE30),
- CI / SG IRON PATTERN
- DIE STEEL LIKE H13, OHNS

# OUR CUSTOMER

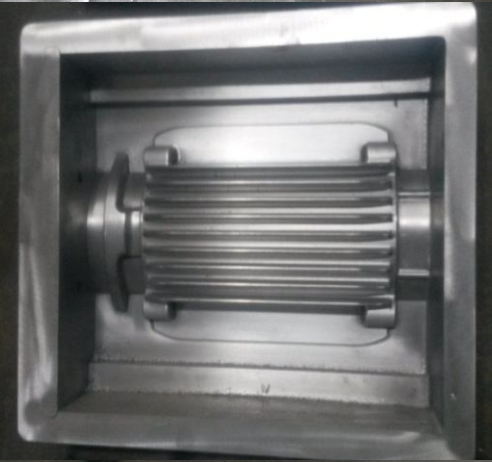
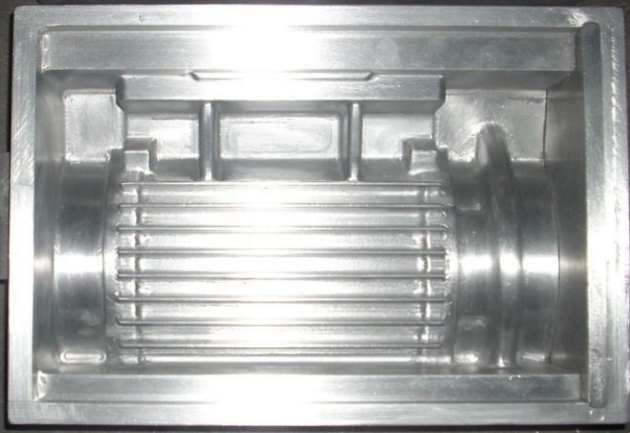
- KIRLOSKAR BROTHERS LIMITED, (DEWAS)
- KIRLOSKAR BROTHERS LIMITED, (SANAND)
- CROMPTON GREAVES LIMITED, (AHMEDNAGAR)
- VE COMMERCIAL VEHICLE LIMITED, (PITHAM PUR)
- INDSUR GLOBLE LIMITED, (HALOL),
- ROTO PUMPS LIMITED, (NOIDA)
- WPIL LIMITED, (GHAZIABAD)
- JAYSWAL NECO INDUSTRIES LIMITED, (NAGPUR)
- LA-GAJJAR PUMPS PVT. LTD. (AHMEDABAD)
- SABAR INDUSTRIES PVT. LTD. (AHMEDABAD)
- D JELFA POMPES (ALGERIE) AND MANY MORE....

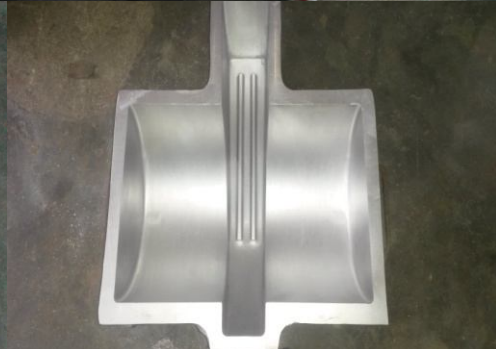
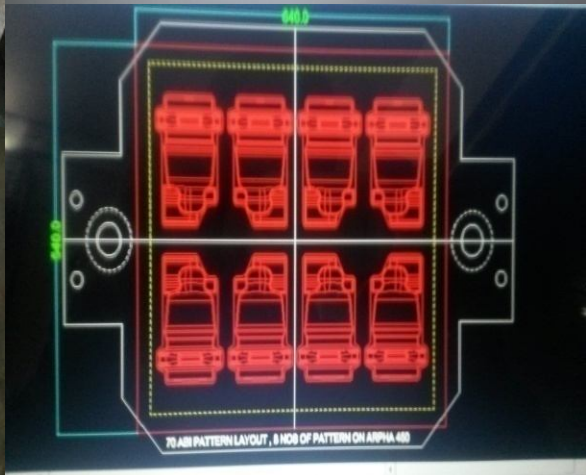














**THANK YOU**